



22 Lower Church Lane , Farnham, GU9 7PS

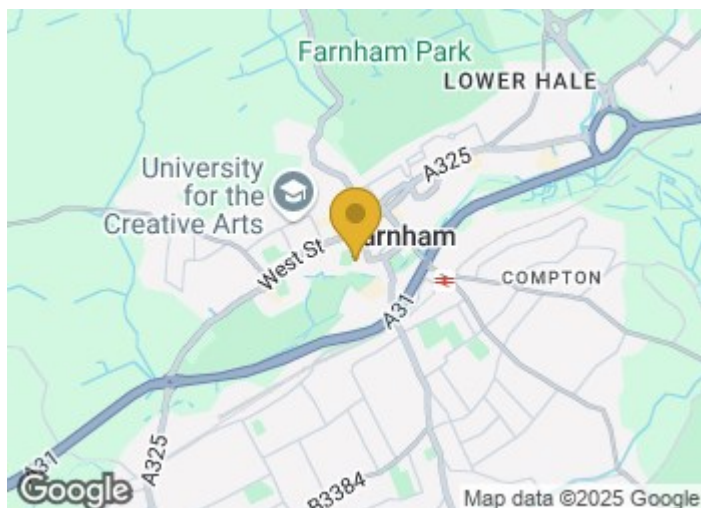
A charming 3 bedroom semi detached Grade II listed three storey character cottage situated in a prime town centre location with a south facing courtyard rear garden.

Price Guide £625,000

22 Lower Church Lane , Farnham, GU9 7PS



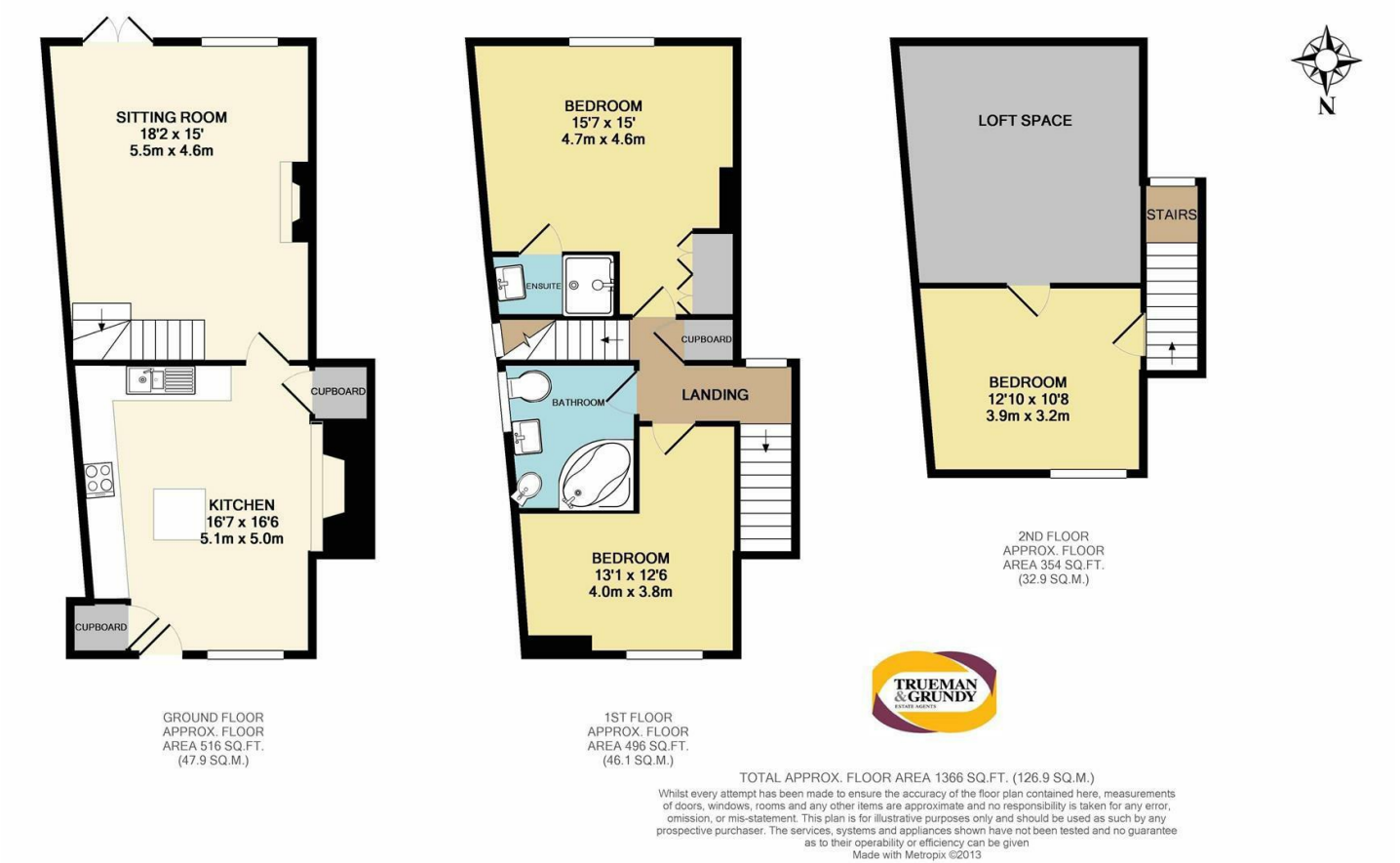
- Sitting room with fireplace
- 2 further bedrooms
- Exposed timbers
- **Historical internal and rear garden photographs**
- Kitchen/dining room
- Bathroom
- Prime town centre location
- Bedroom 1 with en suite shower
- Courtyard garden
- No onward chain



[Directions](#)



Floor Plan



These particulars, whilst believed to be accurate are set out as a general outline only for guidance and do not constitute any part of an offer or contract. Intending purchasers should not rely on them as statements of representation of fact, but must satisfy themselves by inspection or otherwise as to their accuracy. No person in this firms employment has the authority to make or give any representation or warranty in respect of the property.

